

GMES in-situ coordination



Event: 1ST GMES National User Forum Day

Place and date: 29 May, Prague

Presenter: Karla Acosta, GISC communication officer



Outline

- EEA and Eionet
- Role of EEA in GMES
- GMES in-situ component
- GISC objectives
- GISC approach
- GISC results
- GISC next steps



Photo: ginabellinc.com



The EEA

COUNCIL REGULATION (EEC)

No 1210/90 of 7 May 1990

32 member and

7 cooperating countries

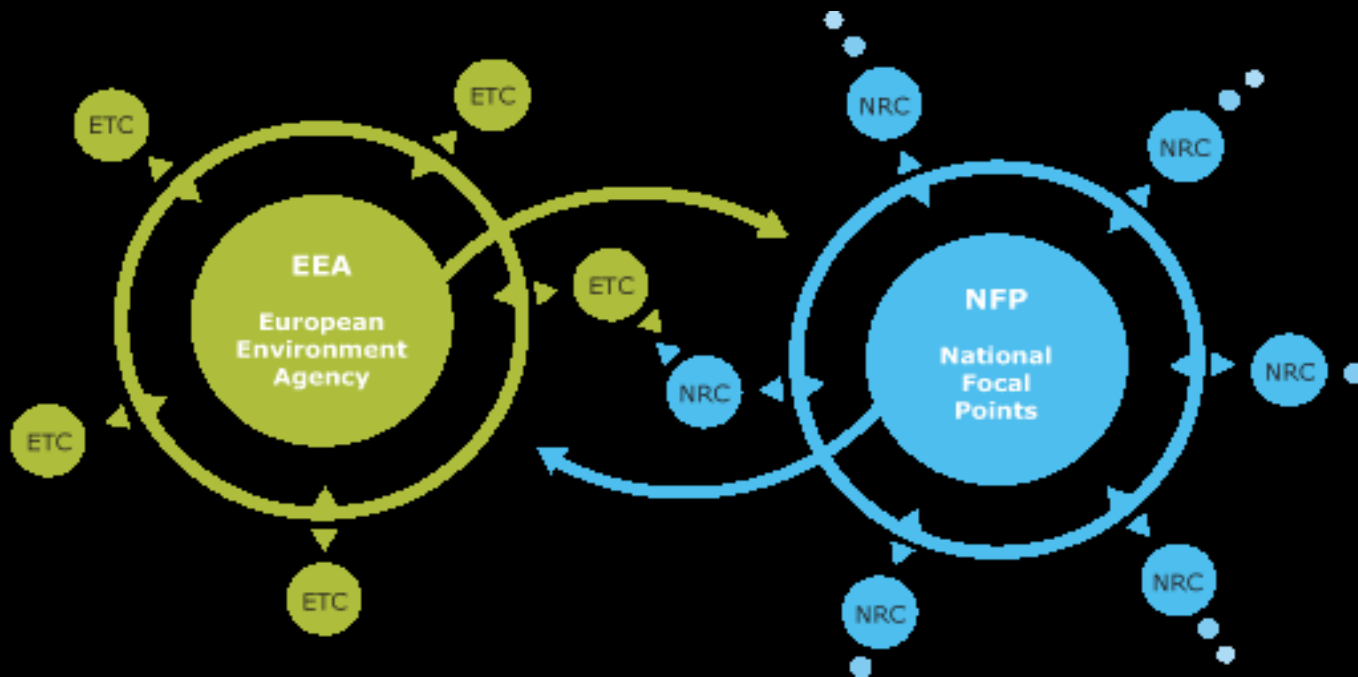
- An independent information provider
- An analyst and assessor
- Bridging science and policy

Dependent upon strong networks to carry out its work ...to support policy cycle processes and inform the public



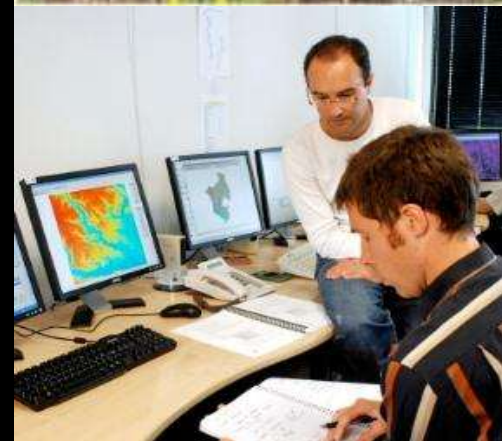
The Eionet

- Coordinating national data flows
- Providing country-level expertise
- Linking EEA to member country sources
- Promoting EEA activities and outputs at national level



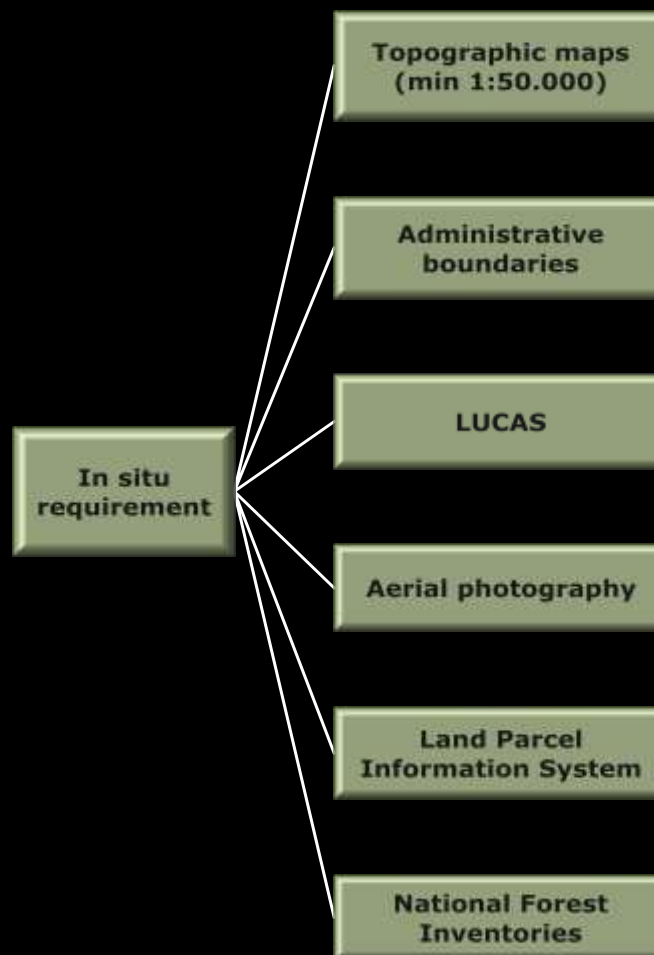
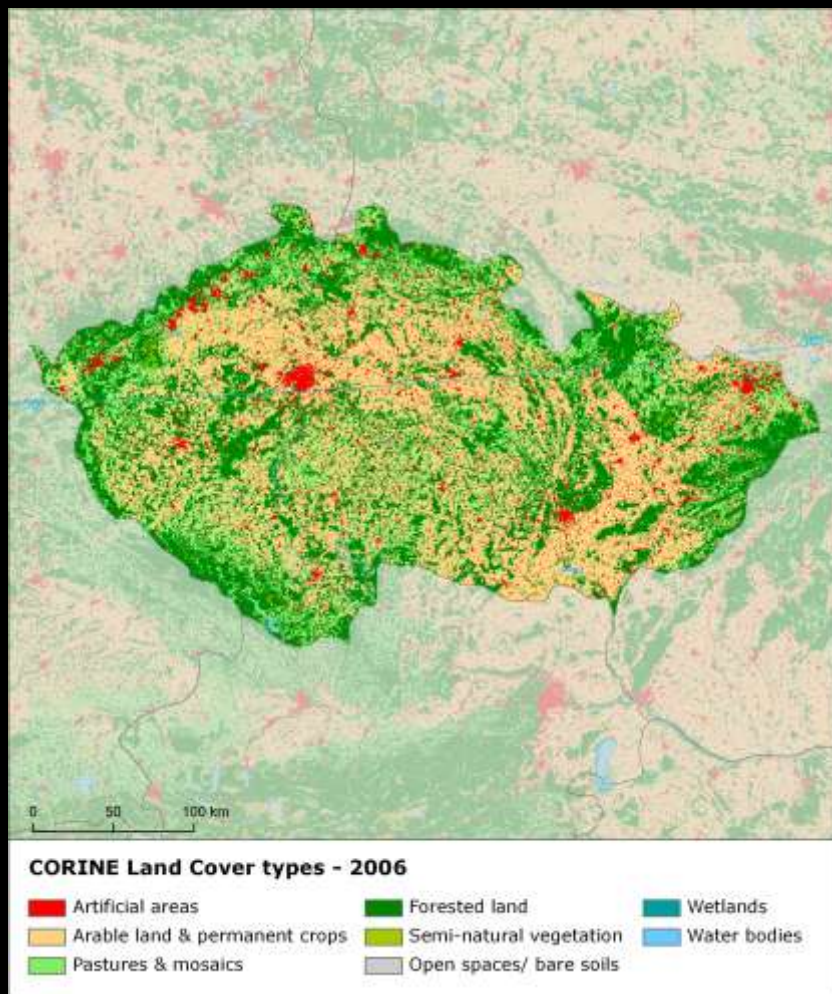
Role of EEA in GMES

- Follow GMES implementation and governance processes
- Coordinate in situ (GISC Project)
- Coordinate GMES Land service (GIO-land)
- Make use of services and federate user requirements



The in-situ component

Example: CLC 2006 / GIO land CLC 2012



GMES In-Situ Coordination

The Goal is to develop an initial framework to secure sustainable provision of in-situ data in support to GMES products and according to end user requirements



Objectives:

1. Concluding partnerships
2. Cataloguing and analysing in-situ requirements
3. Exploring approaches to long-term sustainable solutions
4. Showcasing “quick-wins”.



The approach

To gain commitment from national authorities to secure some priority areas of the in-situ capacity needed

Countries

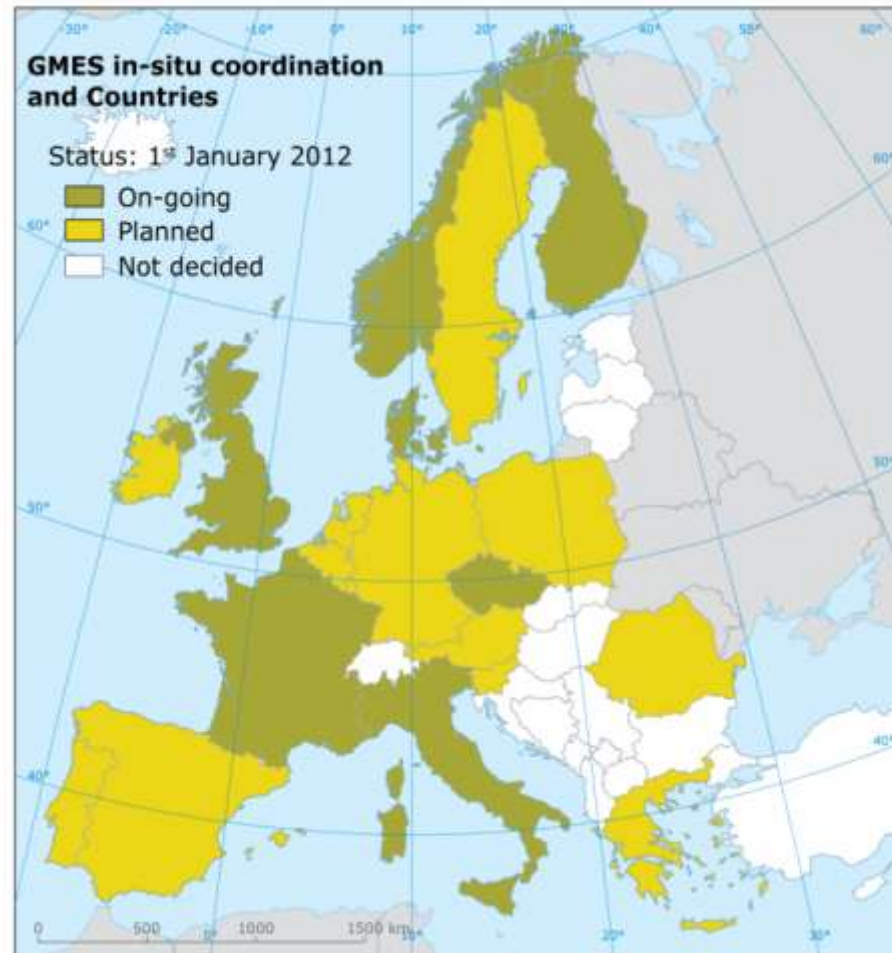
to clarify capacities, identify gaps and constraints and agree on commitment

International coordinating bodies

to explore their potential contribution for sustainable provision of in situ



Country visits



Catalogue of in-situ requirements

Atmosphere



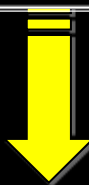
Marine



Emergency



Land



- Meetings with GMES services – clarification of in-situ requirements
- Living Catalogue of in-situ data needs and requirements
- Follow-up by an in-depth analysis of in situ data requirements: overlaps - gaps - constraints - costs



In situ priorities

The purpose of this exercise is to propose criteria to determine priorities for support to meet GMES in-situ requirements.

In applying the criteria, the in-situ requirements for which it is most urgent/important to get in-situ support are identified.



1. Multiple use

2. Lack of agreement

3. Free access but not full quality

4. Free access but no sustainable operation

5. Available only commercially

6. Not available

1. Coordination costs

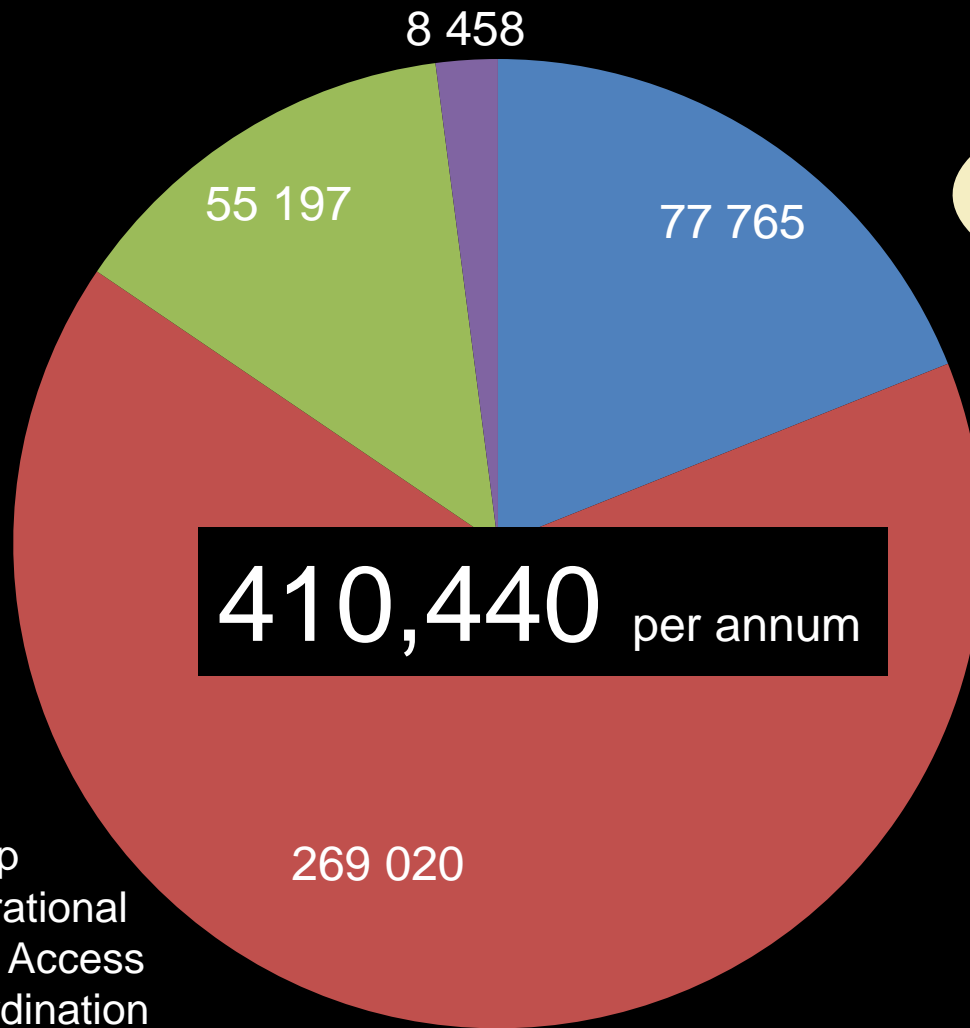
2. Data access costs

3. Operating costs

4. Set-up costs



Valuation of in-situ contribution (all GMES services) – annual costs in 1000 €



*Foreseen EU contribution
for operational GMES
in-situ: 30 – 110 M€*

- Setup
- Operational
- Data Access
- Coordination

For more information:
[Cost valuation report](#)



Cost valuation – (2014 – 2020 total: 2.3 Billion)

In-situ Costs (carried by all GMES partners)	Set-up	Operational	Coordination and data access	Total annual
Land	571	32.000	48.000	78.000
Emergency	857	1.500	6.250	8.500
Atmosphere	36.000	133.000	4.000	173.000
Marine	40.000	102.000	5.000	148.000
Total annual	78.000	268.000	63.000	410.000

Robustness of the cost assessment depends on:

- accuracy of requirements
- methodology and assumptions
- availability of accurate cost figures



Preliminary results on linking GMES to Inspire

GMES services	High match identified	No match	Cannot be assessed
Land	72%	6%	22%
Emergency Response	81%	7%	11%
Atmosphere	100%	0%	0%
Marine	50%	48%	2%
All GMES services	73%	20%	7%

- Inspire does not create new datasets/observations
- Inspire is limited to EU27
- Timeframe of Inspire and GMES is different



Next steps/conclusions

- Delivering results: development of the initial framework
 - **June 2012:** Implementation of quick-wins
 - **2012:** finalising agreements
- Advocating in-situ coordination continuity
 - Uncertainties of GMES future
 - Deficit of coordinating capacities
 - Stronger advocacy of benefits;
 - Sustainability issues;
 - Need for data policy



<http://mdia4010.blogspot.com/>



For more information...

<http://gisc.ew.eea.europa.eu>



The screenshot shows the GISC website in Internet Explorer. The browser title is "GISC - GMES in-situ coordination". The address bar shows "http://gisc.ew.eea.europa.eu". The page features a blue header with the GMES logo and "GISC GMES in-situ coordination". Below the header is a navigation menu with links: CATALOGUE OF DATA PROVIDERS, CATALOGUE, CASEWORK, MEETINGS, DELIVERABLES, FORUMS, ABOUT GISC, and CONTACT. The main content area includes a "GISC PROJECT" section with a description, a "NEWS" section, an "UPCOMING EVENTS" section with a list of events, a "GEMES SERVICES" section, an "EEA ROLE IN GMES" section, and a "NOTIFICATIONS" section. A calendar for September 2010 is visible, and there is a "LATEST UPLOADS" section at the bottom right.

